

Tooele City Mayor Debbie Winn

MONDAY  
*with the*  
MAYOR





# WHAT IS PAR?

PAR is the Tooele City Parks, Arts, and Recreation program that develops and maintains cultural, artistic, and recreational opportunities in the city.



# Thank you for your support of PAR!

● Tooele City residents first voted to approve the Tooele City PAR tax in the November 2004 election and reauthorized the funding in the November 2012 election by a majority of votes!

● Although this measure was voter approved twice before, state law requires that it be voted upon every 10 years, that is why it is back on Tooele City ballots in 2022.



# HOW IS PAR FUNDED?

PAR IS A 1/10TH OF 1%  
SALES AND USE TAX



- ▶ If you purchase a \$10 pizza = 1 penny goes toward PAR
- ▶ If you Purchase \$100 worth of groceries = 10 cents goes toward PAR
- ▶ PAR is not a property Tax
- ▶ Every time someone spends money in Tooele City they are contributing to the Parks, Arts, and Recreation funding.



# HOW WILL PAR APPEAR ON THE BALLOT?

*It will not say  
Parks, Arts, and Recreation  
(PAR)*

## COUNTY BALLOT QUESTIONS

### Proposition #6 - Tooele City Question 1

Shall Tooele City, Utah, reauthorize a .1% sales and use tax to fund cultural facilities, cultural organizations, and parks and recreational facilities in Tooele City?

Funding may be used for capital improvements and operations of publicly owned/operated amenities such as, but not limited to:

- Parks
- Playing Fields/Courts
- Trails
- Playgrounds
- Pavilions

Funding may be used to support municipal or non-profit organizations providing programs such as, but not limited to:

- Youth Groups
- Museums
- Theater Groups
- Festivals
- Fridays on Vine and other Concerts
- Art Classes/Workshops
- Arts Councils

YES

NO

# WHAT ARE THE BENEFITS OF PAR?

Many of the following amenities, programs, and activities that improve our quality of life in Tooele City are possible only through PAR funding.





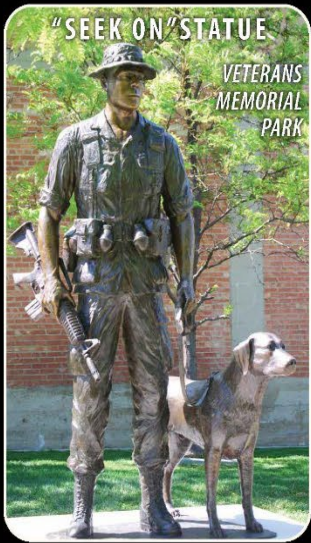
ELTON PARK



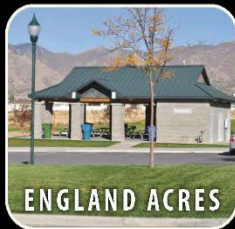
PIONEER MUSEUM



RANCHO PARK



"SEEK ON" STATUE  
VETERANS  
MEMORIAL  
PARK




ENGLAND ACRES



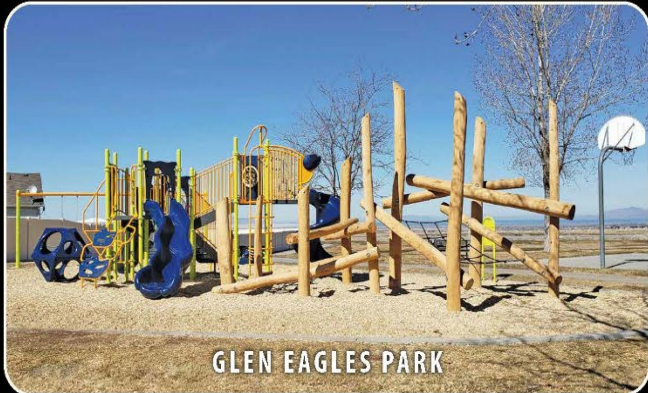
NEW FLOOR  
DOW JAMES

**PARKS**

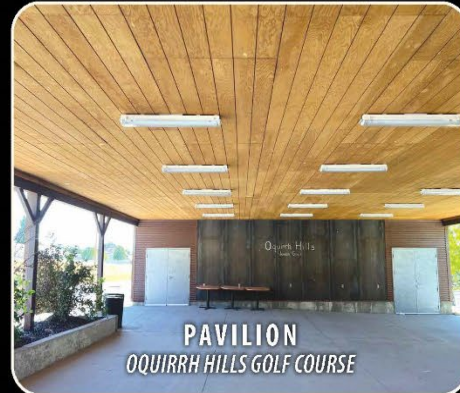
Amenities and improvements at parks and facilities throughout the city made possible by the Tooele City Parks, Arts and Recreation Program


PICKLEBALL



GLEN EAGLES PARK



PAVILION  
OQUIRRH HILLS GOLF COURSE



LINEAR PARK



**ARTS**  
 Community Art Classes  
 & Craft Workshops  
 Offered by the Tooele City  
 Arts Council made possible by  
 the Tooele City Parks, Arts  
 and Recreation  
 Program

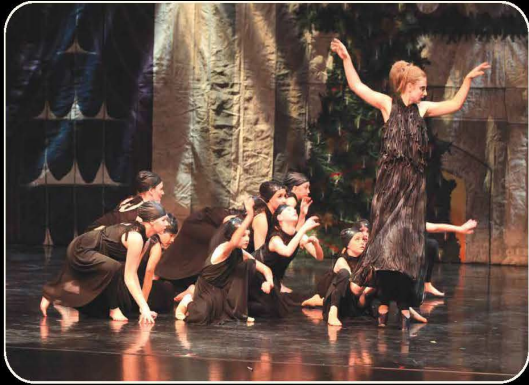




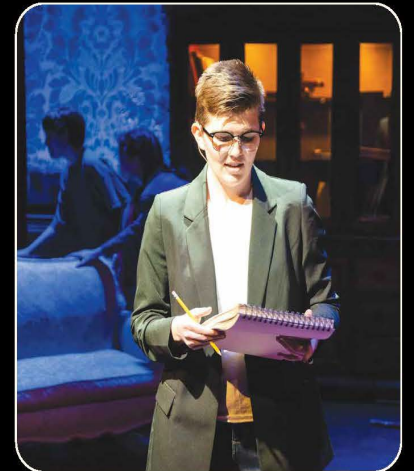


A True Magician is:

- Respectful
- Prepared
- Enthusiastic
- Confident
- Humble



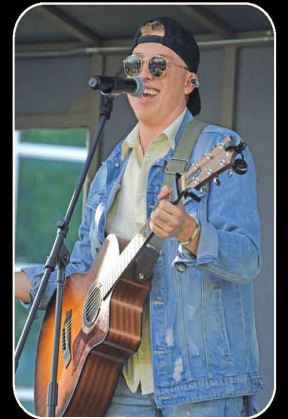
**THEATER**  
 Community and Children's  
 Theater  
 Made possible  
 by the Tooele City Parks,  
 Arts and Recreation  
 Program





**CONCERTS**

Made possible  
by the Tooele City Parks,  
Arts and Recreation  
Program



# Voter Information

## Voter Info

- If you are a registered voter you will automatically receive a ballot in the mail beginning October 18, 2022.
- Voter registration must be received by the county clerk before 5:00 pm on Friday, October 28, 2022 to receive a mail ballot.
- Voters may register to vote at an early voting location or at a polling location on election Day. Please bring at least two forms of identification to the polling location.
- If you need help registering to vote, contact the Tooele County Clerk's Office at 435-843-3140 or online at [tooeleco.org/elections](http://tooeleco.org/elections)

## Ballot Info

### How to Return Your Ballot:

- By Dropbox – There is a dropbox at Tooele City Hall and the Tooele County Building
- By Mail – Have it postmarked no later than November 7, 2022. However, we encourage you to use the convenient drop boxes to save the cost of a stamp!
- Election Day – General Election – November 8, 2022
- Vote Centers – Desert Peak Complex & Tooele County Admin Building (basement)  
7am – 8pm on Election Day
- Early Vote – Early Voting will be held October 27th, 28th and November 3rd, 4th from 12pm – 4:30pm., in the Tooele County Clerk's Office which is located at 47 S. Main St. #318, Tooele UT 84074

## [vote.utah.gov](http://vote.utah.gov)

- 2022 Election Information
- Learn How to Register to Vote
- Register to Vote or Update Registration
- Learn About Acceptable Forms of Voter Identification
- Track Your Ballot
- Learn About Candidates & Issues





How can you  
get more  
information  
about PAR?



435-843-2104



shilob@tooelecitey.org



tooelecitey.org

Follow Us on Social Media  
@tooelecitey



Tooele City Mayor Debbie Winn

MONDAY  
*with the*  
MAYOR



Email your questions for the Mayor to:

[mondaywiththemayor@tooelecity.org](mailto:mondaywiththemayor@tooelecity.org)